



Changzhou Medical  
Bioengineering Co. Ltd



CE 0197  
ISO 13485



20 year's Dedication To Surgery  
Better Quality & Excellent Service



# GENERAL SURGERY

# 普外科

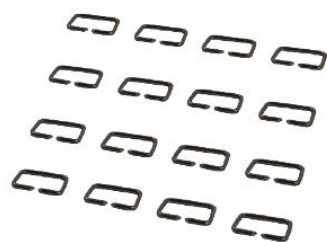
## Disposable Skin Stapler

It is applied in Abdominal, Gynecological, Orthopedic, and Thoracic surgery for skin closure. (Replace of conventional skin sutures)

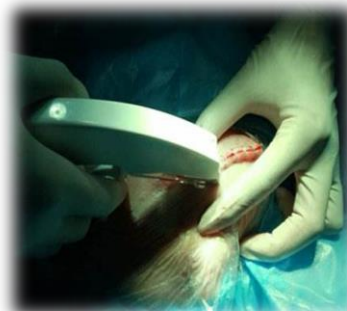
## 一次性使用皮肤缝合器

适用于腹部、妇科、骨科、胸外科的皮肤闭合手术。(取代传统缝合线)

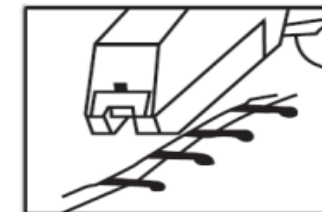
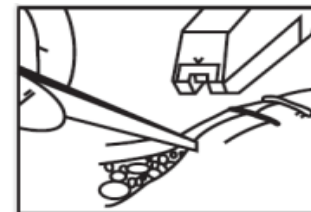
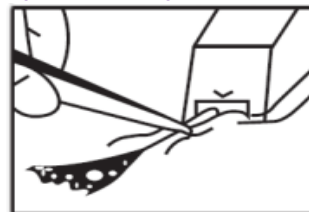
CE 0197



### Clinical Practice



### Operation Steps



### Specifications

| Stapler Code | Staple Size | Staples | Remover | Skin interior tissue                |
|--------------|-------------|---------|---------|-------------------------------------|
| CSPF-35W     | 7.4x4.6     | 35      | CSPF-CW | More than 5 mm<br>Conventional Use  |
| CSPF-35R     | 5.4x3.5     | 35      |         | Less than 5 mm<br>Ankle, Knee, Head |



Changzhou Medical  
Bioengineering Co.Ltd



CE 0197  
ISO 13485



20 year's Dedication To Surgery  
Better Quality & Excellent Service



# GENERAL SURGERY

# 普外科

## Disposable Laparoscopic Trocar

It is applicable in tissue puncture in operation of laparoscopic surgery.

## 一次性使用腹腔镜用穿刺器

供腹腔镜检查和手术过程中，对人体腹壁组织穿刺，建立腹腔手术的工作通道用。

CE 0197



CS-TC-12



CS-TC-10



CS-TC-5

### Clinical Practice



传统开腹手术于腹腔镜微创治疗切口对比



腹腔镜微创治疗切口对比

### Specifications

| Code     | Puncture conical diameter | Casing inner diameter | Casing length | Puncture casing length | Puncture conical length |
|----------|---------------------------|-----------------------|---------------|------------------------|-------------------------|
| CS-TC-5  | 5.5                       | 6                     | 112           | 160                    | 205                     |
| CS-TC-10 | 10.3                      | 10.4                  |               |                        |                         |
| CS-TC-12 | 12.8                      | 12.9                  |               |                        |                         |



**Changzhou Medical  
Bioengineering Co.Ltd**

Since 1997



CE 0197  
ISO 13485



20 year's Dedication To Surgery  
Better Quality & Excellent Service



## ANESTHESIOLOGY/ONCOLOGY

## 麻醉科/肿瘤科

### Disposable Infusion Pump

It is used for continous minimal infusion during clinical ease-pain treatment, to relieve or lenitive pain.

### 一次性使用输注泵

临床用于缓解疼痛治疗过程中持续的小剂量输注药液，以减轻疼痛。



#### Clinical Practice



#### Specifications

| Type       | Code          | Max Capacity (ml) | Flow Rate (ml/h) | Bolus (ml/time) | Time Lock-out (min) |
|------------|---------------|-------------------|------------------|-----------------|---------------------|
| Continuous | CBI-M100      | 100               | 2.0/3.0/4.0      | /               | /                   |
|            | CBI-M150      | 150               |                  |                 |                     |
|            | CBI-M200      | 200               | 2.0/3.0/4.0      | /               | /                   |
|            | CBI-M275      | 275               | 2.0/3.0/4.0/5.0  | /               | /                   |
| With Bolus | CBI+PCA-M100  | 100               | 2.0/3.0/4.0      | 0.5             | 15                  |
|            | CBI+PCA-M150  | 150               | 2.0/3.0/4.0      | 0.5             | 15                  |
|            | CBI+PCA-M200  | 200               | 2.0/3.0/4.0      | 0.5             | 15                  |
|            | CBI+PCA-M275  | 275               | 2.0/3.0/4.0/5.0  | 0.5             | 15                  |
| Multirate  | CBI+PCA-MR100 | 100               | 2-4-6-8          | 0.5             | 15                  |
|            | CBI+PCA-MR150 | 150               | 2-4-6-8          | 0.5             | 15                  |
|            | CBI+PCA-MR200 | 200               | 2-4-6-8          | 0.5             | 15                  |
|            | CBI+PCA-MR275 | 275               | 2-4-6-8          | 0.5             | 15                  |





**Changzhou Medical  
Bioengineering Co.Ltd**  
Since 1997



**CE 0197**  
ISO 13485



**20 year's Dedication To Surgery**  
**Better Quality & Excellent Service**



# UROLOGY

# 泌尿科

## Circumcision Staplers for Single Use

It is applied for clinical circumcision surgery operation.

## 一次性使用包皮切割吻合器

临床适用于包皮环切手术。

**CE 0197**



**TYPE C**



**TYPE B**



**TYPE A**

### Clinical Practice



### Specifications

| Stapler Code | Circular blade diameter | Staple height | Staples |
|--------------|-------------------------|---------------|---------|
| CSFA-C13     | 13                      | 2.5           | 10      |
| CSFA-C17     | 17                      |               | 12      |
| CSFA-C22     | 22                      |               | 16      |
| CSFA-C25     | 25                      |               | 18      |
| CSFA-C29     | 29                      |               | 20      |
| CSFA-C34     | 34                      |               | 24      |



**Changzhou Medical  
Bioengineering Co.,Ltd**

Since 1997



CE 0197  
ISO 13485



20 year's Dedication To Surgery  
Better Quality & Excellent Service



## Company Profile

Established in 1997, Changzhou Medical Bioengineering Co., Ltd is a modernized professional enterprise specialized in producing medical consumables. The company is located at Changzhou where is nearby Shanghai.

The company covers an area of 10,000m<sup>2</sup> and 2,000m<sup>2</sup> purification clean workshop. It has improved producing and testing equipment , advanced production technology and holds a high quality of managers、 technicians and staffs. It also passed ISO13485 certification and CE certification. As a domestic quality brand enterprise in China, 20 years' dedication to Anesthesiology and Surgical devices. Products are not only enlarged in domestic medical market but also well sold in overseas, and had exported to Europe, Middle East, South America, Southeast Asia, Africa and other regions.



常州生物医学工程有限公司  
Changzhou Medical Bioengineering Co., Ltd.

## Company Show



## Product Introduction

|                        |  |          |
|------------------------|--|----------|
| ANESTHESIOLOGY<br>麻醉科  | Disposable Infusion Pump                         | 输注泵      |
|                        | Disposable Anesthesia Puncture Kit               | 麻醉穿刺包    |
| GENERAL SURGERY<br>普外科 | Disposable Skin Stapler and Remover              | 皮肤缝合器    |
|                        | Disposable Circular Stapler                      | 管型吻合器    |
|                        | Disposable Anorectal Stapler (PPH)               | 肛肠吻合器    |
|                        | Disposable Anorectal Ligation Device             | 肛肠套扎器    |
|                        | Disposable Linear Stapler                        | 直线型吻合器   |
|                        | Disposable Linear Cutter Stapler                 | 直线切割吻合器  |
|                        | Disposable Laparoscopic Trocar                   | 腹腔镜穿刺器   |
|                        | Disposable Incision Dilator                      | 切口保护套    |
| UROLOGY<br>泌尿科         | Disposable Endoscopic Linear Cutter Stapler      | 腔镜切割吻合器  |
|                        | Disposable Micro-invasive Fascial Closure System | 筋膜闭合器    |
|                        | Disposable Multi-channel Single-port Trocars     | 多通道单孔穿刺器 |
|                        | Circumcision Staplers for Single Use             | 包皮切割吻合器  |
|                        | Disposable Foley Catheter Tray                   | 导尿包      |

## Contact Us

Mr. Andrew Shi

Changzhou Medical Bioengineering Co.,Ltd

117, West Chenjiatou, Heping Village, Zhenglu, Changzhou, Jiangsu, China

TEL: 0086 519 8896 6750 FAX: 0086 519 88964890

Mobile: 0086 519 88966750 (WhatsApp, Wechat)

EMAIL: changsheng@china-changsheng.com